



## **ADMISSIONS CONSULTATION FOR Sommerby Primary School – Mowbray Education Trust Mowbray Education Trust – Primary Admissions Policy**

Mowbray Education Trust, and on behalf of Sommerby Primary School, is seeking your views on the changes proposed below. Our consultation will run for 6 weeks from Thursday 19<sup>th</sup> December 2024 to Thursday 30<sup>th</sup> January 2025 (between 1<sup>st</sup> Oct and 31<sup>st</sup> Jan). The determined admissions arrangements must be published on our website by 15 March.

This policy will operate for entry September 2026. It will also apply to all mid-term admissions for the school year 2026/27 and for subsequent years until further notice.

The Pupil Admission number for the Trust schools will not change nor will the oversubscription criteria.

This amendment will be added to the overarching Mowbray Education Trust Primary Admissions policy which has been updated to align with the Language used by Leicestershire County council.

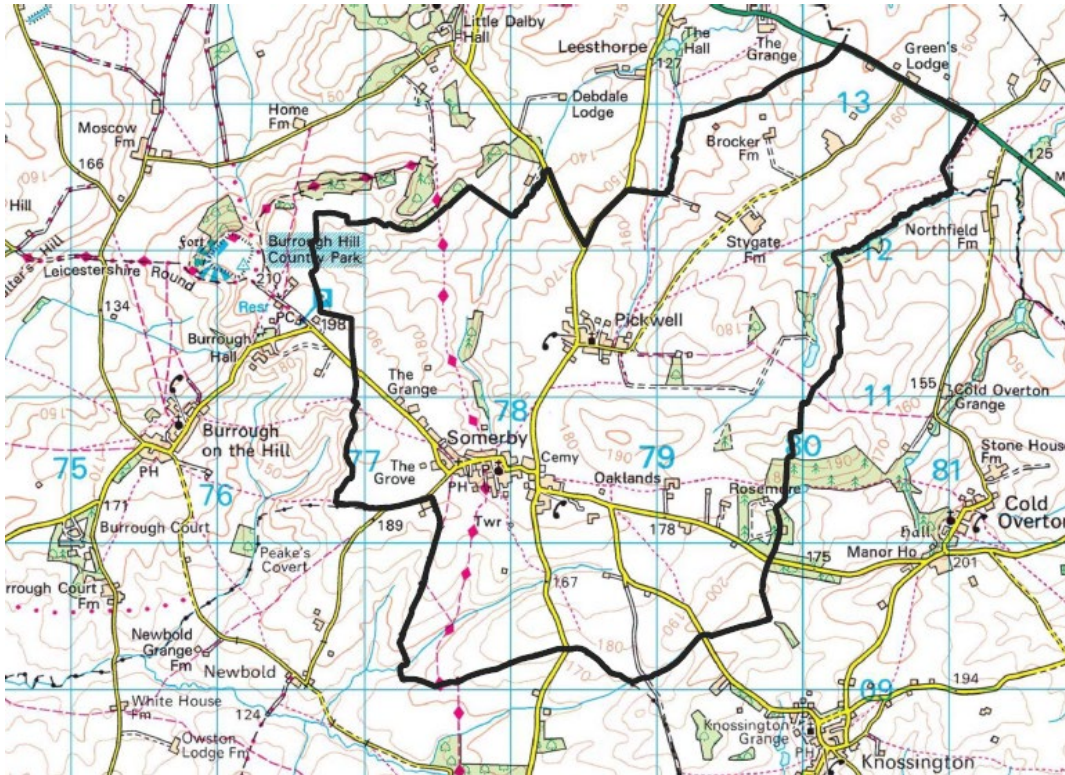
### Proposal1:

- Sommerby Primary School is seeking increase its catchment area to include Owston village. (Please see current and proposed catchment maps at appendix 1).
- At present Owston does not sit in any Leicestershire County Council school catchment area. Sommerby Primary School is Owston’s nearest school at a distance of 2.2 miles.
- Including Owston in the school’s catchment will ensure children have access to their local school, without the need for appeal.
- The population of Owston Civil Parish at the 2011 census was 112 therefore will not significantly impact our admissions numbers.
- Increasing our catchment area will help futureproof our admissions intake due to recent falls in birth rates.

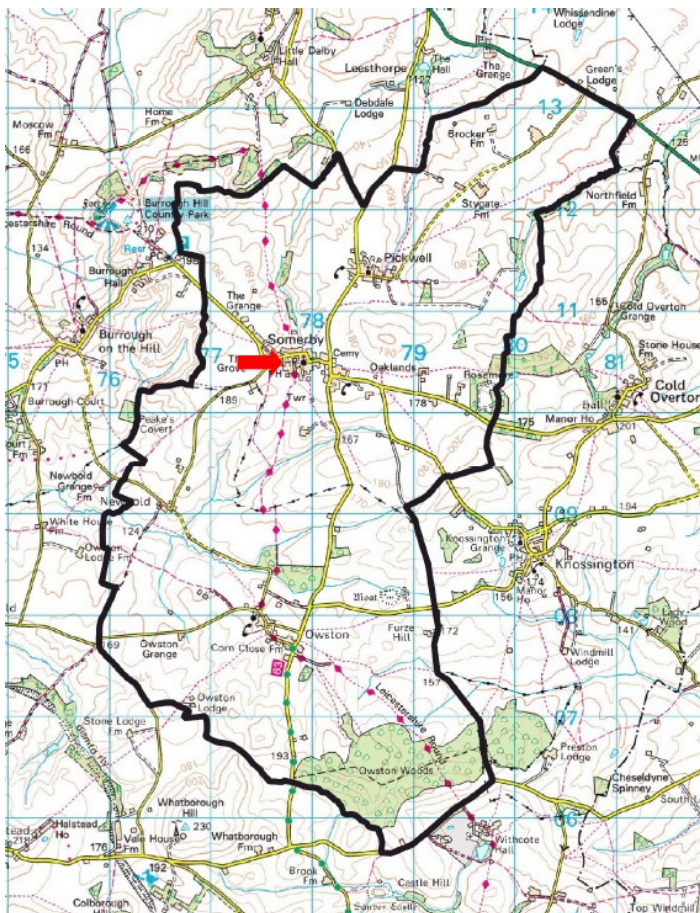
Proposal 2:

- The wording seen in appendix 2 has been added to the Mowbray Education Trust Primary Admissions policy to clarify points within the policy. Any duplicate wording has been removed.
- The intention of the wording change is to allow ease of access and use of the policy for parents and schools.
- There have been no changes in the processes of admissions, the amended wording offers clarification and replaces complex wording with simpler wording for parents' understanding.
- Changes are highlighted in yellow in the Primary Admissions Policy for 2026/27.

**Appendix 1.**  
Catchment Maps –  
Pre consultation



Post consultation – to include red shaded area.



Appendix 2.

### **Normal FTA / Transfer Applications**

Mowbray Education Trust Primary schools, as required, will participate in full with the LA's FTA / Transfer Co-ordinating Scheme. This means parents must apply through the LA online system or using the LA's common application form. The application forms must be completed and submitted or returned by the national closing date (First time admissions primary - 15 January).

### **Late Applications**

Any applications received after the closing date will be accepted but considered only after those received by the closing date. You are therefore encouraged to ensure that your application is submitted on time. All supplementary information i.e. medical consultant letters to proof of change of address, remains the parent's responsibility to supply.

### **Oversubscription Criteria**

If any of the Trust primary schools have more applications than places available, a ranked list will be drawn up based on the criteria listed in section 9 and the local authority informed accordingly. Children who have a Statement of Special Educational Needs that name any Trust school will be admitted even if the school is full.

### **Oversubscription (OSL 'Waiting') List**

Parents whose children have been refused a place at a Mowbray Education Trust primary school will automatically be added to the Mowbray Education Trust primary school OSL (waiting) list. The OSL for admission will remain open until the end of the Autumn Term in the admission year.

The OSL is ranked using the oversubscription criteria listed above. The OSL may change, this means that a child's OSL position during the year could go 'up' or 'down'. The OSL makes no distinction between on time or late applications.

### **Appeals**

If your child has been refused a place at the one of the Trust schools, you retain the statutory right to appeal. Mowbray Education Trust has engaged the services of LCC to conduct all our appeals. Therefore, you can appeal using LCC's 'Notice of Appeal' available through the following link

<https://www.leicestershire.gov.uk/education-and-children/schools-colleges-and-academies/school-admissions/appeal-a-school-place-and-check-waiting-lists-online>

LCC will arrange the appeal on behalf of the governors to be heard by an independent panel, whose decision is binding on all parties.

### **Applications during the School Year**

For applications made outside of the normal round of admissions i.e. seeking to move school part way through an academic year, where a place exists at the requested school it will be offered. Mowbray Education Trust has engaged the services of LCC to co-ordinate mid-term applications. This is because LCC's online systems operate 24/7, and throughout school holidays. If a Mowbray Education Trust Primary school has a space, LCC will offer the place, if there are more applications than places the applications will be ranked and LCC informed, who in turn inform parents of outcomes.

### **Fair Access Protocol**

Mowbray Education Trust Primary schools will participate in full with the LA's *Fair Access Protocol* in order to make sure that the most vulnerable children are offered a place at a suitable school as quickly as possible. This includes admitting children above the published admission number of a school that is already full.

### **Deferred, Part time and Delayed Entry**

All parents at 4+ entry i.e. 'first time admissions' (FTA) can defer or seek part time entry. The request must be in writing and accompanied where possible with lead professional documentation supporting the request.

*Definitions:*

*Deferred entry: a request to school seeking a start later in the school year but no later than the start of the summer term.*

*Delayed entry: a request to the admitting authority seeking to apply and start a year later from reception.*

### **Objections**

Objections to any aspect of the determined admissions arrangements may be made to the Office of the Schools Adjudicator ([www.education.gov.uk/schoolsadjudicator](http://www.education.gov.uk/schoolsadjudicator)), but must be made before 15<sup>th</sup> May.